



KONICA MINOLTA

bizhub PRO 920

DO BUSINESS BETTER



_B&W
_PRODUCTION
_PRINTER
_COPIER
_SCANNER



CONNECT_

COMMUNICATE_

CONTROL_



THE PRO THAT POWERS UP YOUR WORKFLOW.

Production professionals know that you can't compromise with quality – or sacrifice the speed, reliability and finishing capabilities that corporate and commercial customers demand. That's why they choose the bizhub PRO 920. With speed of 92 ppm, it keeps pace with the busiest document traffic – and rugged, heavy-duty construction with a robust monthly duty cycle of 750,000 pages gives you production power you can count on. With fast, flexible scanning and multiple finishing options, you'll be able to streamline your input/output and customize a production system fine-tuned to your application. Need a boost in speed and cost-efficiency? Add bizhub PRO to your workflow.

The essentials of imaging

INCREASE OUTPUT, REDUCE DOWNTIME – AND KEEP WORK FLOWING.

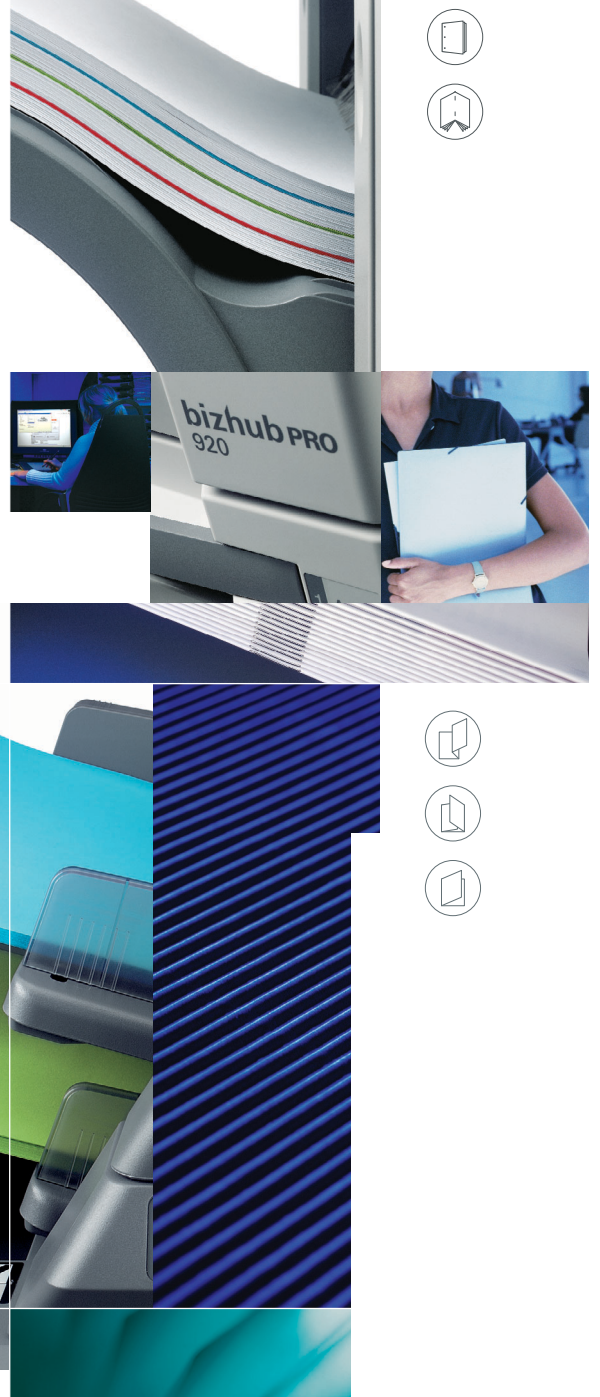
Changing demands, rising volume, expanding document traffic – they're the realities in today's production world. With bizhub PRO 920, you'll be up to the challenge.

Fast 92 ppm output in both printing and copying gives you the power to handle everything from walk-up copy jobs to full production printing in central reprographic and print-for-pay environments. Reports and presentations, training manuals and human resource documents – you can produce them all in high quantities, with superior print/copy quality that keeps corporate and commercial customers coming back for more.

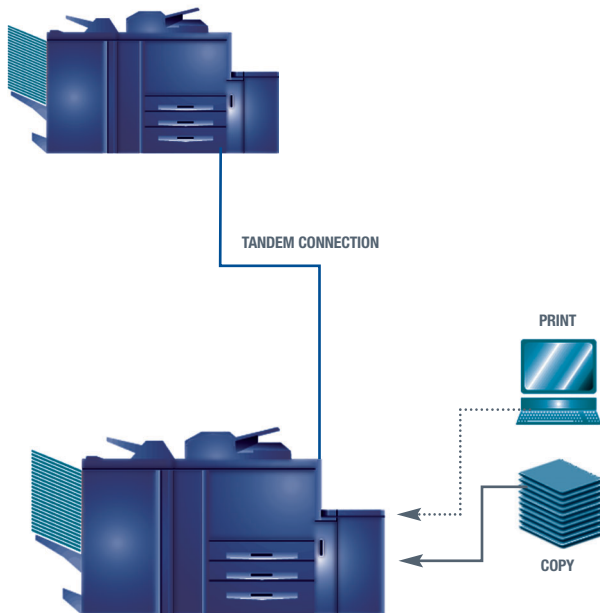
Add an optional image controller to your system, and you'll have point-and-click production control – along with network integration and full-function scanning, to move digital documents through your production system with greater speed and flexibility. Documents can be stored on your built-in HDD for quick recall and reprinting. You can even view random page thumbnails in seconds before you print.

A full array of finishing options let you produce saddle-stitched trimmed booklets, staple automatically in 8 positions, 2/3-hole punch documents, half-fold, z-fold or tri-fold pages, even add pre-printed covers or inserts post-process.

And if all this sounds good now, wait until you see the bizhub PRO 920 in action.



CONNECT_INPUT_OUTPUT_CLIENTS_PROJECTS_PRODUCTIVITY



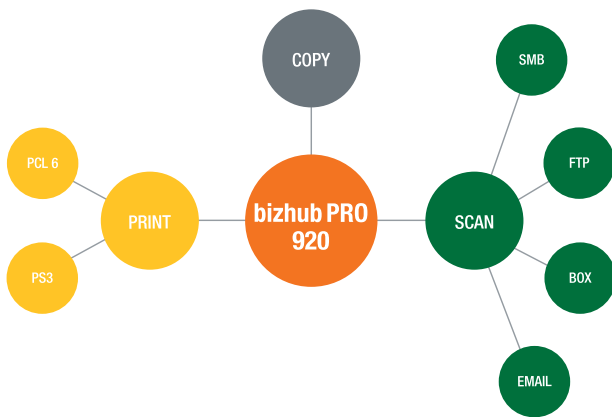
Double your output speed. With Tandem Print and Tandem Copy capabilities, two bizhub PRO 920's can be connected to produce up to 184 ppm – a real advantage for large jobs on tight deadlines.

Improve your image. The bizhub PRO 920 uses an exclusive Konica Minolta Simitri® Polymerized Toner formulation with particles of smaller size and more consistent shape – to improve detail and definition, make text more legible and give graphics and halftones greater detail. Toner yield of 66,000 impressions also looks better on your bottom line.

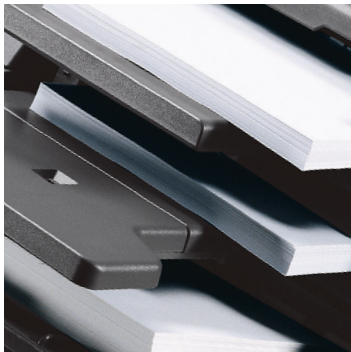
Move documents more easily. Along with high speed and high quality, the bizhub PRO 920 can give boost your productivity with fast, flexible scanning to multiple destinations in PDF and TIFF, Scan-to-Email with LDAP addressing capability, Scan-to-FTP on your FTP server, and Scan-to-SMB on desktop PCs.

Safeguard data in secure mailboxes. The bizhub PRO also provides Scan-to-HDD capability, allowing you to storing documents in secure digital mailboxes on a built-in 40 GB HDD for “pull-scan” access – with ISO 15408 certification to meet the utmost in security standards.

Work with a partner you can trust. In years of experience with high-volume printing, Konica Minolta has established a proven reputation for solid support and professional service – making the bizhub PRO 920 your ideal production print partner.



Simitri



FUNCTIONS AND OPTIONS TO GET THE JOB DONE BETTER.

The bizhub PRO 920 is a true professional – designed with rugged, heavy-duty components, smooth-sliding metal paper drawers, and a precision paper path to handle the most challenging production print demands.

It's also a modular, multifunctional printer/copier that packs more power in a compact footprint to save space on your production floor. You can add print controller, a choice of booklet-making or sorting/stapling auto finishers, and auto-finishing enhancements and upgrades as your production needs grow.



COMMUNICATE_DISTRIBUTION_CONCEPTS_CHANGES_SCHEDULES_VALUES.

Feed originals faster. A standard high-speed Reversing Auto Document Feeder loads up to 100 sheets, including originals up to 11" x 17" – with sheet-through scanning technology to keep documents moving.

Heavy-duty universal paper drawers. A 1,000-sheet universal paper tray plus two 500-sheet trays and 150-sheet manual bypass give you 2,150-sheet standard capacity – with the ability to print and copy full-bleed 11" x 17" originals on 12" x 18" paper and print tabs on up to 110 lb. index stock.

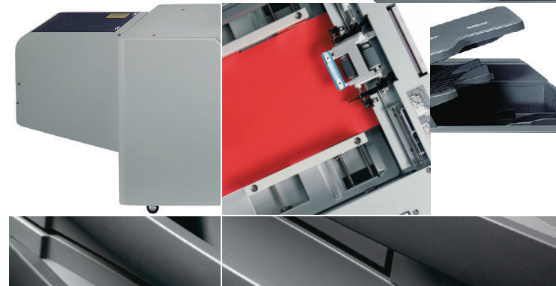
Work longer with 6,650-sheet capacity. Add an optional Large Capacity Tray to your system, and you'll have 6,650-sheet maximum paper capacity to handle long print/copy runs with less manual effort.

Simple automatic finishing. A cost-effective FS-516 Finisher option provides sorting and 8-position stapling for sets of up to 100 sheets.

Booklets on demand. With the optional FS-604 Booklet Finisher, you can fold and saddle-stitch booklets staple up to 50 sheets, and half-fold or tri-fold sheets for flyers and mailing pieces.

Selectable hole-punching. Add the PK-505 Punch Unit to your FS-516 or FS-604 Finisher, and you'll have selectable 2/3-hole punch capability.

Z-fold and punch kit. The optional ZU-602 Z-Fold/Punch Kit combines z-fold and selectable 2/3-hole punch capabilities for your FS-516 or FS-604 Finisher.



Trimmed booklets for a professional look. The optional TU-501 Trimmer Unit provides face trimming capability for your FS-604 Booklet Finisher.

Add color covers and insert pages. With the optional PI-501 Post-Insertion Tray, you can add preprinted covers or inserts post-process.

Even an intern can print like a pro. The bizhub PRO 920 control panel has a simple command and menu interface common to other Konica Minolta bizhub models – so it's easy to understand, even for first-time users.



POWERFUL PRINT CONTROL, EFFORTLESS NETWORKING.

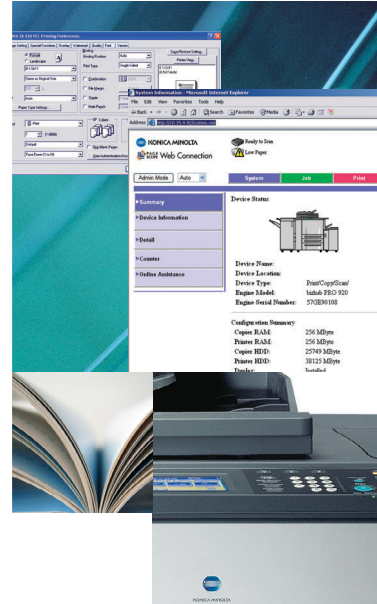
Power reaches full potential through control – so the bizhub PRO 920 has a superb image control option that lets you print at full rated speed of 92 ppm and finish documents with all the flexibility that your modular production system can provide.

Konica Minolta also brings you powerful software for web-based device control through your standard web browser, networked system integration, fast access to scanned documents and more. There's a full PageScope Suite of software solutions to speed your production workflow – because faster, smoother production is the whole idea behind bizhub PRO.

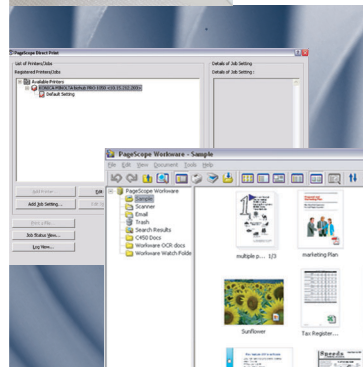
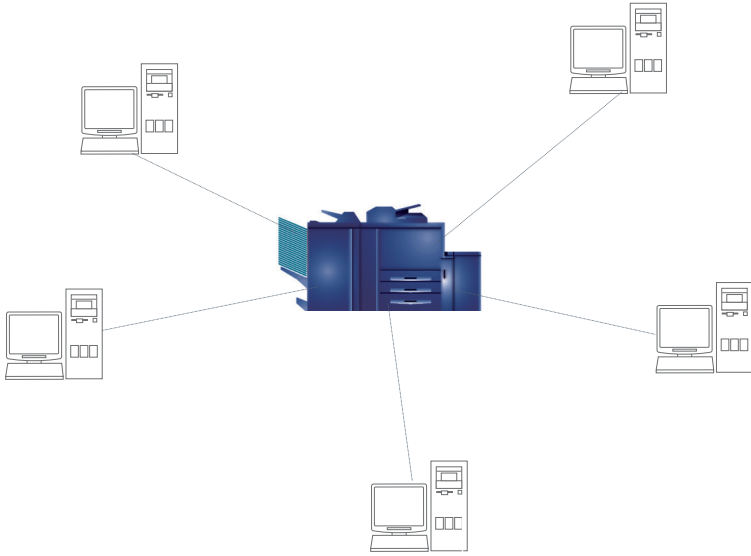
A real workhorse: the IC-203 Image Controller. It's an embedded option with 800 MHz CPU, Windows/Mac drivers, PCL5e/PCL6, and optional Adobe PostScript 3 capabilities to process and print jobs faster.

Simple PC interface. Your IC-203 Image Controller allows anyone to control advanced job handling capabilities, manage multiple jobs at once, recall jobs and job settings from memory, program jobs, and check status of jobs in queue.

A better way to make connections. With PageScope Web Connection, you can display detailed printer information on a simple, intuitive GUI: device status, paper supply, toner level, copy count. No need to get up, walk to your printer, and see if it's ready to go into production.



CONTROL_SPEED_QUALITY_RELIABILITY_FLEXIBILITY_SECURITY



Power to manage an entire fleet. PageScope Net Care allows IT administrators to manage an entire fleet of multifunction devices from a single point – including both Konica Minolta bizhub MFPs and MIB-compliant devices from other manufacturers.

Control print queues and print jobs. With PageScope Job Spooler, you can control print queues more effectively – and PageScope Direct Print lets you send PDF or TIFF files directly to print without opening the applications first.

Import addresses and security information. PageScope Data Administrator™ lets you import one-touch Email addresses from LDAP-enabled Email servers and maintain uniform security data throughout your network.

A personal approach to document management. Optional PageScope Workware™ software lets you view documents as thumbnail images, drag-and-drop to share or print, and search your files by file-name, date, tags, even a combination of criteria – or perform full-text search on documents that have been OCR-converted.



bizhub PRO 920

GENERAL SPECIFICATIONS

GENERAL SPECIFICATIONS:

TYPE:
PRODUCTION PRINTER/COPIER/SCANNER

IMAGING SYSTEM:
HIGH-SPEED DUAL BEAM
LASER IMAGING

DEVELOPMENT SYSTEM:
SIMITRI® POLYMERIZED TONER

MONTHLY DUTY CYCLE:
750,000 PAGES

PRINT/COPY SPEED:
92 PPM (8-1/2" X 11")

PRINT/COPY RESOLUTION:
600 X 600 DPI (1200 X 600 DPI EMULATION)

HALFTONE REPRODUCTION:
256 GRADATIONS

MEMORY:
256 MB (STANDARD)
512 MB (MAXIMUM)
40 GB HARD DISK DRIVE

WARM-UP TIME:
5.5 MINUTES (APPROX.)

FIRST COPY:
3.1 SECONDS OR LESS (APPROX.)

COPY QUANTITY:
1 - 9,999 COPIES

MAGNIFICATION:
ZOOM RANGE: 25 - 400%, 0.1% INCREMENTS
PRESET REDUCTION: 79%, 77%, 65%, 50%,
PRESET ENLARGEMENT: 121%, 129%,
155%, 200%

EXPOSURE MODES:
AUTO, TEXT, PHOTO, TEXT/PHOTO, MANUAL

MAXIMUM ORIGINAL SIZE:
12" X 18" (11" X 17" THROUGH RADF)

PAPER SIZE (THROUGHPUT):
5-1/2" X 8-1/2" TO 12" X 18"

PAPER WEIGHTS (THROUGHPUT):
13 LB. BOND TO 53 LB. BOND
(MAX. 200GSM = 110 LB. INDEX)

PAPER SUPPLY:
500-SHEET UNIVERSAL PAPER TRAYS (2)
1,000-SHEET UNIVERSAL PAPER TRAY
150-SHEET INTELLIGENT BYPASS
(TO 12" X 18")

OPTIONAL PAPER SUPPLIES:

4,500-SHEET LARGE CAPACITY TRAY
(8-1/2" X 11" PORTRAIT)
4,000-SHEET LARGE CAPACITY TRAY
(TO 12" X 18")

MAXIMUM PAPER CAPACITY:
6,650 SHEETS (TOTAL, WITH OPTIONS)

DOCUMENT FEEDER:
SPEED: UP TO 92 ORIGINALS PER MINUTE
CAPACITY: UP TO 100 SHEETS
PAPER SIZE: 5-1/2" X 8-1/2" TO 11" X 17"
PAPER WEIGHT: 16 LB. BOND TO 53 LB. BOND
(110 LB. INDEX)

POWER REQUIREMENTS:
208V-240V, 17.6 A, 60HZ
(DEDICATED LINE)

DIMENSIONS (W X D X H):
35" X 30-3/4" X 47-3/8"

WEIGHT:
616 LBS.

OPTIONS:
EM-701 MEMORY UPGRADE (256 MB)
FS-516 FINISHER (SORT, 100-SHEET STAPLE)
FS-604 FINISHER (SORT, 50-SHEET STAPLE,
SADDLE-STITCH, TRI-FOLD)
IC-203 EMBEDDED IMAGE CONTROLLER
LU-403 LARGE CAPACITY TRAY
(4,500 SHEETS, 8-1/2" X 11")
LU-404 LARGE CAPACITY TRAY
(4,000 SHEETS, TO 12" X 18")
PI-501 POST-PROCESS INSERTER
PK-505 PUNCH UNIT
PS-503 ADOBE POSTSCRIPT KIT (FOR IC-203)
TU-501 TRIMMER UNIT
ZU-602 PUNCH AND Z-FOLD UNIT

PAGESCOPE APPLICATIONS:
PAGESCOPE WEB CONNECTION
(EMBEDDED WEB PAGE FOR DEVICE)
PAGESCOPE NET CARE
(NETWORKED DEVICE MANAGEMENT)
PAGESCOPE JOB SPOOLER
(PRINT QUEUE MANAGEMENT)
PAGESCOPE DIRECT PRINT (DRAG-AND-DROP
PRINTING OF TIFF AND PDF FILES)
PAGESCOPE WORKWARE™ (OPTIONAL –
DOCUMENT MANAGEMENT SOLUTION)

SECURITY:
ISO-15408 COMPLIANT

AVAILABLE FUNCTIONS*

ACCESSIBILITY
ACCOUNT MANAGEMENT (PRINT/COPY/SCAN
COUNTER)
AUTO DOCUMENT FEEDING
AUTO DUPLEX (STACKLESS)
AUTO EXPOSURE SETTING
AUTO LAYOUT (CENTERING)
AUTO LOW POWER, RESET, SHUT-OFF
AUTO MAGNIFICATION
AUTO PAPER SELECT
AUTO TRAY SWITCHING
BOOK COPY
BOOKLET MAKING
BORDER ERASE (FRAME, FOLD, FRAME & FOLD)
CHAPTERIZATION
CONCURRENCY (COPY, PRINT, SCAN)
CUSTOM ORIGINALS
COVER INSERTION
DUPLEX PRINTING
ELECTRONIC COPY MONITOR (1,000 ACCOUNTS)
ENERGY SAVE MODE
EXPOSURE MODES (AUTO, TEXT, PHOTO,
TEXT/PHOTO, MANUAL)
FACE-UP OR FACE-DOWN OUTPUT
FOLDING (HALF-FOLD, TRI-FOLD, Z-FOLD)
GROUPING
HELP (CONTEXT SENSITIVE)
HOLE-PUNCHING (2/3-HOLE)
IMAGE CENTERING
IMAGE OVERLAY
IMAGE INSERT
IMAGE ROTATION
IMAGE SHIFT
IMPOSITION
INSERT SHEETS
INTELLIGENT JOB BUILDING
INTERRUPT (PAUSE)
IPP PRINTING
JOB LIST
JOB RESERVE (MAX. 99 JOBS)
JOB PROGRAMMING (30 JOBS)
JOB STATUS
LOW POWER MODE
MIXED ORIGINAL DETECTION
NEGATIVE IMAGE CAPABILITY
NETWORK SCANNING
NON-IMAGE AREA ERASE
OFFLINE FINISHING
PRESET SCALING
POST-PROCESS COVER/SHEET INSERTION
POWER SAVE
PRINT SPOOLING (MAX. 99 JOBS)
PROOF COPY
SADDLE-STITCHING
SCANNING:
SCAN-TO-E-MAIL (WITH LDAP)
SCAN-TO-FTP
SCAN-TO-SMB (DESKTOP)
SCAN-TO-HDD (MAILBOX)
SECURE PRINT
TWIN SCANNING
SORTING
STAMPING (CONTINUOUS)
STAPLING (8-POSITION)
STORYBOARDING (2-IN-1, 4-IN-1, 8-IN-1,
TO 16-IN-1 FROM PRINT DRIVER)
TABS
TANDEM COPY CAPABILITY
TRANSPARENCY INTERLEAVING (BLANK OR
COPIED SHEETS)
TRIMMING MODE
WATERMARKING
WATERMARK NUMBERING
WEEKLY TIMER
ZOOM

IC-203 (OPTIONAL) IMAGE CONTROLLER SPECIFICATIONS

TYPE:
EMBEDDED IMAGE CONTROLLER

CENTRAL PROCESSING UNIT:
800 MHZ

MEMORY/HDD (SHARED WITH ENGINE):
256 MB (STANDARD)
512 MB (MAXIMUM)
40 GB HARD DISK DRIVE

PRINT SPEED:
92 PPM WITH BIZHUB PRO 920

PRINT RESOLUTION:
600 X 600 DPI
(1200 X 600 DPI EMULATION)

SCANNING:
SCANNING IN TIFF AND PDF FORMATS
SCAN-TO-EMAIL (WITH LDAP)
SCAN-TO-FTP
SCAN-TO-SMB (DESKTOP)
SCAN-TO-HDD (MAILBOX)
TWIN DRIVER FOR SCAN RETRIEVAL
FROM HDD

SCANNING SPEED:
UP TO 92 OPM (ORIGINALS PER MINUTE)

PRINT DRIVERS:
WINDOWS 98/ME, NT 4.0, 2000/XP,
SERVER 2003
MACINTOSH OS 9.0 OR LATER
OS X (10.2/10.3)

PAGE DESCRIPTION LANGUAGE:
STANDARD: PCL 5E/XL (PCL6), TIFF
DIRECT PRINT
OPTIONAL: ADOBE POSTSCRIPT 3,
PDF DIRECT PRINT

PROTOCOLS:
TCP/IP, IPX/SPX, ETHERTALK, IPP, NETBEUI

bizhub PRO



© 2007 KONICA MINOLTA BUSINESS SOLUTIONS U.S.A., INC. All rights reserved. Reproduction in whole or in part without written permission is prohibited. Konica Minolta and The essentials of imaging are trademarks of KONICA MINOLTA HOLDINGS, INC. bizhub, bizhub PRO, PageScope, and Workware are trademarks of KONICA MINOLTA BUSINESS TECHNOLOGIES, INC. Simitri is a registered trademark of KONICA MINOLTA BUSINESS SOLUTIONS. All other brands and product names are registered trademarks or trademarks of their respective owners.

Design & specifications are subject to change without notice.

*Some functions may require options, which may or may not be available at time of launch.



KONICA MINOLTA

KONICA MINOLTA
BUSINESS SOLUTIONS U.S.A., INC.

100 Williams Drive
Ramsey, NJ 07446

www.kmbs.konicaminolta.us
www.kmbs.konicaminolta.us/solutions

Item #: 920BRO
1/07